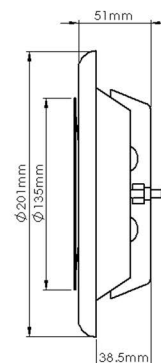
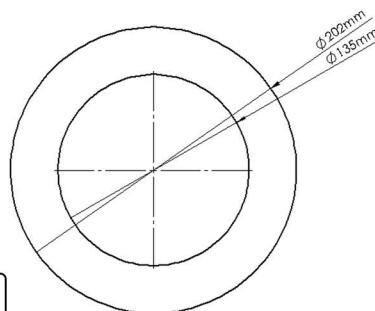
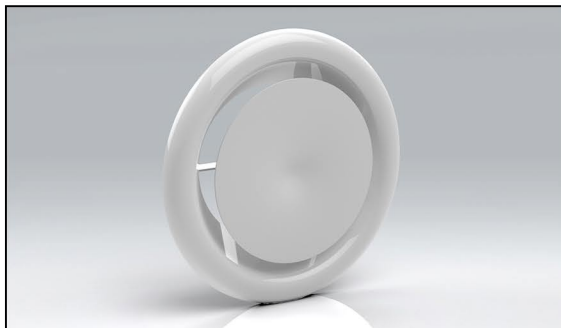


PRODUCT DATA SHEET

MW155

WHITE METAL CEILING AIR SUPPLY VALVE



☐ RAL9016

MANUFACTURER:	VERPLAS LTD
PART NUMBER:	MW155
SIZE:	150mmØ
FOR USE WITH:	VERPLAS SYSTEM 150
BOX QUANTITY:	7
INDIVIDUAL WEIGHT:	510g
COLOUR	White
MIN OPERATING TEMP	-15°C
MAX OPERATING TEMP	+60°C

SPECIFICATION DETAILS

The MW155 150mm diameter Round White Metal Ceiling Air Extract Valve is manufactured from White Epoxy Powder Coated Steel. It has a male spigot for connection inside of the System 150 duct.

The MW155 extract air valve is fully adjustable and has a locking nut to fix the position of the controlled disc upon commissioning.

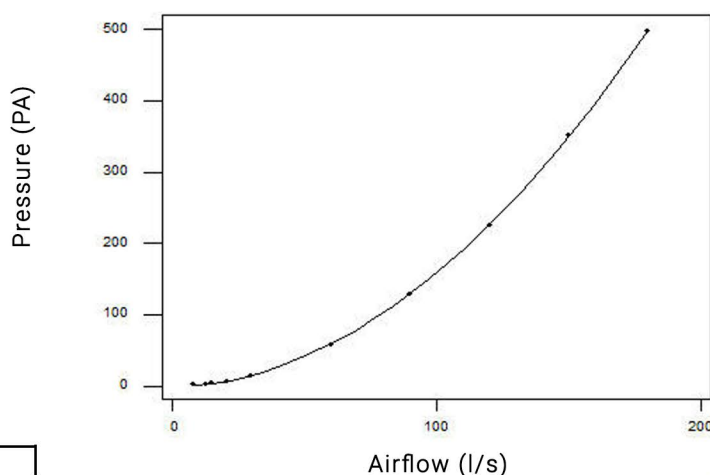
The MW155 is supplied complete with a fixing body with pre-drilled holes for installation.

MW155 has been designed for use with Verplas System 150 Round.

AIRFLOW RESISTANCE

8 l/s	2.00 pa
13 l/s	3.00 pa
21 l/s	7.00 pa
30 l/s	14.50 pa
60 l/s	57.40 pa
120 l/s	227.00 pa

PERFORMANCE CURVE



Associated Ancillaries

VKC673
150mmØ 2m
Round Pipe

VKC661
150mmØ Round
Wall Plate

VKC360
150mmØ 90°
Round Elbow Bend

